



Jeffreys Road, Clapham, SW4

2 bedroom flat - conversion to let

£485 Per Week

Unfurnished

Property Details

This does not have a HMO license and suitable for couples, two sharers or a family only.

Keating Estates are proud to present a bright and appealing, two double-bedroom conversion flat with study, arranged over the first and second floors of an attractive Victorian terrace on Jeffrey's Road, perfectly situated between Clapham and Stockwell High Streets.

The property is entered on the raised ground floor, stairs lead to the first floor with a modern bathroom with a separate shower nestled at the back of the building. An impressive separate reception room spans the entire width of the building and is flooded with natural light through multiple double-glazed windows. Sitting adjacent is a well-proportioned eat-in kitchen diner with plenty of worktop and storage space. The reception room is spacious and the second floor comprises the two comfortable bedrooms and study, with 950 square feet on offer and high ceilings throughout, which contribute to the bright and airy atmosphere throughout this split-level home.

Features

- Two double bedrooms
- Study
- Spacious reception
- Bright and airy throughout
- Victorian conversion
- Ideally located a short stroll to Clapham and Stockwell High Streets
- Unfurnished
- Split over two floors with a raised ground floor entrance

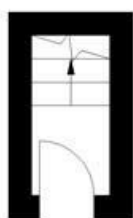
Council tax band D **EPC rating D (62)**



Jeffreys Road, Clapham, SW4

Jeffreys Road, SW4
2 bedroom flat

Approximate internal area: 990 sqft / 92 sqm



Ground Floor
Entrance



While we try our very best, floor plans are produced as a guide only and we take no responsibility for the precise accuracy with which any property is represented.

Jeffreys Road, Clapham, SW4

